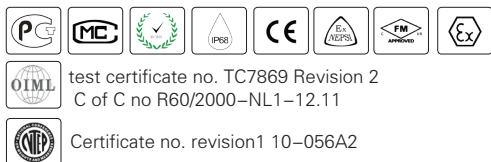


BM8D



- Stainless steel shear beam load cell (150kg and 300 kg are bending beam load cells)
- Hermetically sealed IP68
- Suitable for floor scales, vehicle-test line, hopper scales and other electronic weighing devices
- High accuracy
- Wide range of capacities



Available models

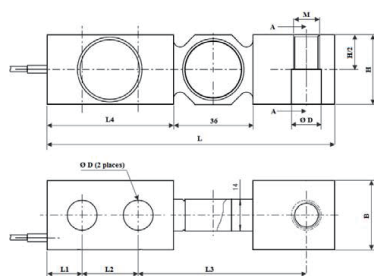
xxkg	C3/C5/C6/A5M/B10S/B10M	BM8D-xx-xxkg-6B
xxt	C3/C5/C6/A5M/B10S/B10M	BM8D-xx-xxt-6B
xxlb	A5M/B10S/B10M	BM8D-xx-xx-6YB
xxklb	A5M/B10S/B10M	BM8D-xx-xxK-6YB

50kg-300kg approved by OIML C3.
 3.0t-15t approved by OIML C5.
 500kg-2.5t approved by OIML C6.
 500KG-10t (1klb-20Klb) S1 type approved by NTEP A5S/A5M/B10S/B10M.

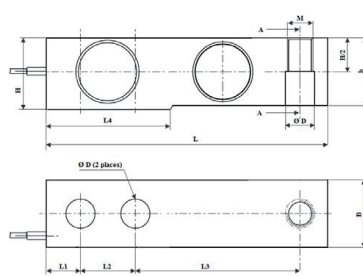
Specification

Accuracy class		OIML R60 C3	OIML R60 C4	OIML R60 C5	OIML R60 C6	
Output sensitivity (= FS)	mV/V	2.0 ± 0.004		3.0 ± 0.008		
Maximum capacity (E _{max})	t	0.15, 0.3, 0.5, 1, 1.5, 2, 2.5, 3, 5, 7.5, 10				0.5, 1, 1.5, 2, 2.5
Maximum number of load cell intervals (nLC)	N _{max}	3000	4000	5000	6000	
Ratio of minimum LC verification interval Y = E _{max} / v _{min}	Y	10000	15000	20000	20000	
Combined error	%FS	± 0.0230	± 0.0175	± 0.0140	± 0.0116	
Minimum dead load	of E _{max}	0%				
Safe overload	of E _{max}	150 %				
Ultimate overload	of E _{max}	300 %				
Zero balance	%FS	± 1.0				
Excitation, recommended voltage	V	5 ~ 12(DC)				
Excitation maximum	V	18(DC)				
Input resistance	Ω	350 ± 3.5				
Output resistance	Ω	350 ± 3.5				
Insulation resistance	MΩ	≥ 5000 (50VDC)				
Compensated temperature	°C	-10 ~ +40				
Operating temperature	°C	-35 ~ +65				
Storage temperature	°C	-40 ~ +70				
Element material		Stainless steel				
Recommended torque on fixation	N.m	M12: 75	M20:450	M24:750		
Ingress protection (according to EN 60529)		IP68				
ATEX classification (optional)		II1G Ex ia IIC T4	II1D Ex iaD 20 T73°C C	II3G Ex nL IIC T4		

Dimensions in mm



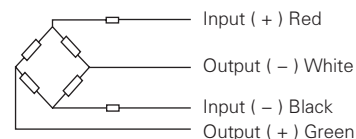
100kg -300kg (Bending)



Other capacities (Shear)

Dimension Capacity	L	L1	L2	L3	L4	B	H	h	ΦD	ΦD1	Φd1	Φd2	M
0.15t-0.3t						31.3 (1.23)		-					
0.5t	130 (5.12)	15.7 (0.62)	25.4 (1.0)	76.2 (3.0)	57.1 (2.25)	31.1 (1.22)	31.3 (1.23)	24.8 (0.98)	13.5 (0.53)	18 (0.71)	4 (0.16)	2 (0.08)	M12
1t						31.3 (1.23)		26.0 (1.024)					
1.5t - 2t								28.0					
2.5t - 5t	171 (6.75)	19 (0.75)	38.1 (1.5)	95.2 (3.75)	76.2 (1.024)		36.8 (1.45)	34.8 (1.37)	20.5 (0.81)	25 (0.98)	4 (0.16)	2 (0.08)	M20
7.5t-10t	222 (8.75)	25.4 (1.0)	50.8 (2.0)	120.7 (4.75)	101.6 (1.024)	49.5 (1.95)	49.5 (1.95)	47.5 (1.87)	26.9 (1.06)	-	-	-	M24

Wiring



- Shielded, 4 conductor cable.
- Cable diameter: Φ5mm.
- Standard cable length: 5m.
- Shield not connected to element.